



OFFICIAL LODGE HOLIDAY GIFT

# Jolly Lodger

VERIFIED ASSEMBLY INSTRUCTIONS



You'll need a cutting implement (scissors, X-Acto Knife, shark tooth, etc.), and some sort of adhesive (glue stick, double sided tape, tree sap, etc.).

Begin by carefully cutting out each piece.

Then, fold and crease along every dotted line.

Apply adhesive and assemble the body of The Jolly Lodger™.

Next, roll the mast into a tube and adhere it to the ship.

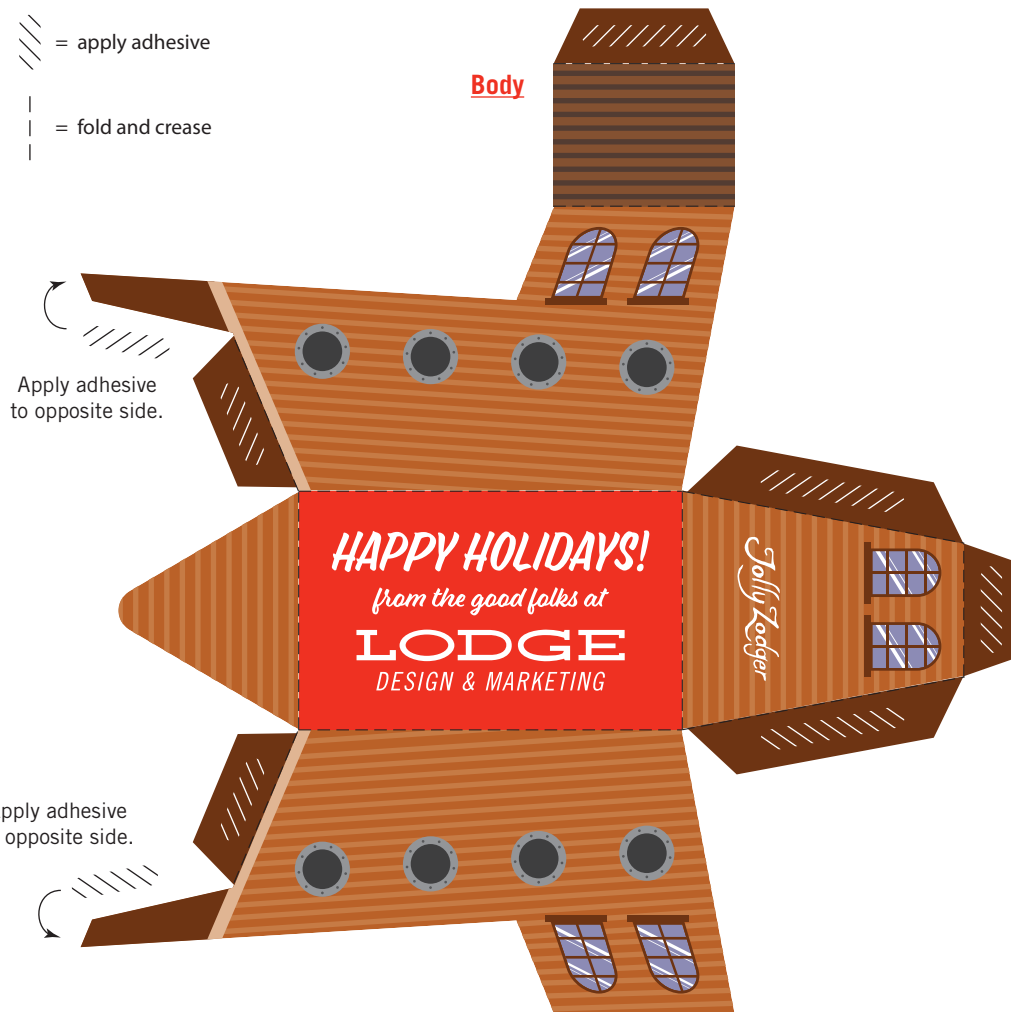
Carefully cut two holes in the main sail and work it onto the mast.

Stick The Jolly Lodger™ flag into the mast and set sail!

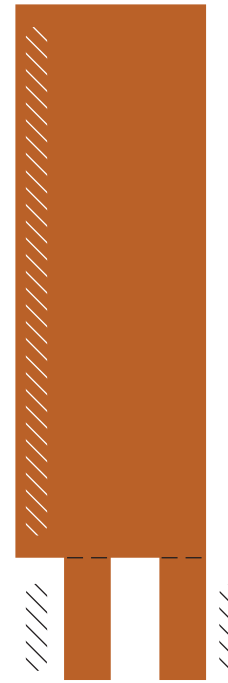


= apply adhesive  
 = fold and crease

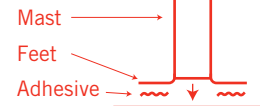
**Body**



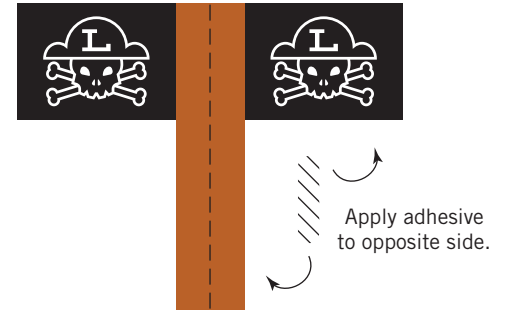
**Mast**



Apply adhesive to opposite side.  
Adhere like so:



**Flag**



**Sail**





OFFICIAL LODGE HOLIDAY GIFT

# MONSTER LODGE

VERIFIED ASSEMBLY INSTRUCTIONS



You'll need a cutting implement (scissors, X-Acto Knife, machete, etc.), and some sort of adhesive (glue stick, double sided tape, ectoplasm, etc.).

Begin by carefully cutting out each piece.


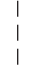
Then, fold and crease along every dotted line.

Apply adhesive and assemble the body of Monster Lodge™.

Next, apply adhesive and carefully assemble the roof one corner at a time.

Slide the roof on and you're done! It should fit snugly. If not, you may need to do a little precision trimming.



 = apply adhesive  
 = fold and crease

